

## INTERFACE CONVERTERS

**4 x E1 to 4 x 10/100  
Ethernet protocol converter  
with RS-232 monitoring port**



**Ethernet interface**

## ST-2908-FA

### Overview

2908-FA Interface Converter is a device that takes ASIC chip as its core and enables Ethernet data to be transmitted through multi 4E1 channels. 2908-FA Interface Converter breaks through the bandwidth limit of single E1 Ethernet bridge. It is very easy to make use of the existing rich E1 resources in the public networks to quickly extend the range of the Ethernet LAN. 2908-FA Interface Converter is an enhancement model of the Ethernet to multi E1 converter. It means that with a built-in bit error detector, the device can find which E1 is not capable to be used because of too much bit errors, and then automatically cut down the bad one, to keep the Ethernet data transmission continuously.

2908-FA Interface Converter is a multifunction and high performance L2 switch which build in the port cross engine to realize the conversion between two Ethernet interface and E1 interface. The equipment supports the function used as Ethernet transceiver or Ethernet net bridge. As the extension of Ethernet, This converter may realize Ethernet interconnection at low cost via the E1 channel provided by existing network.

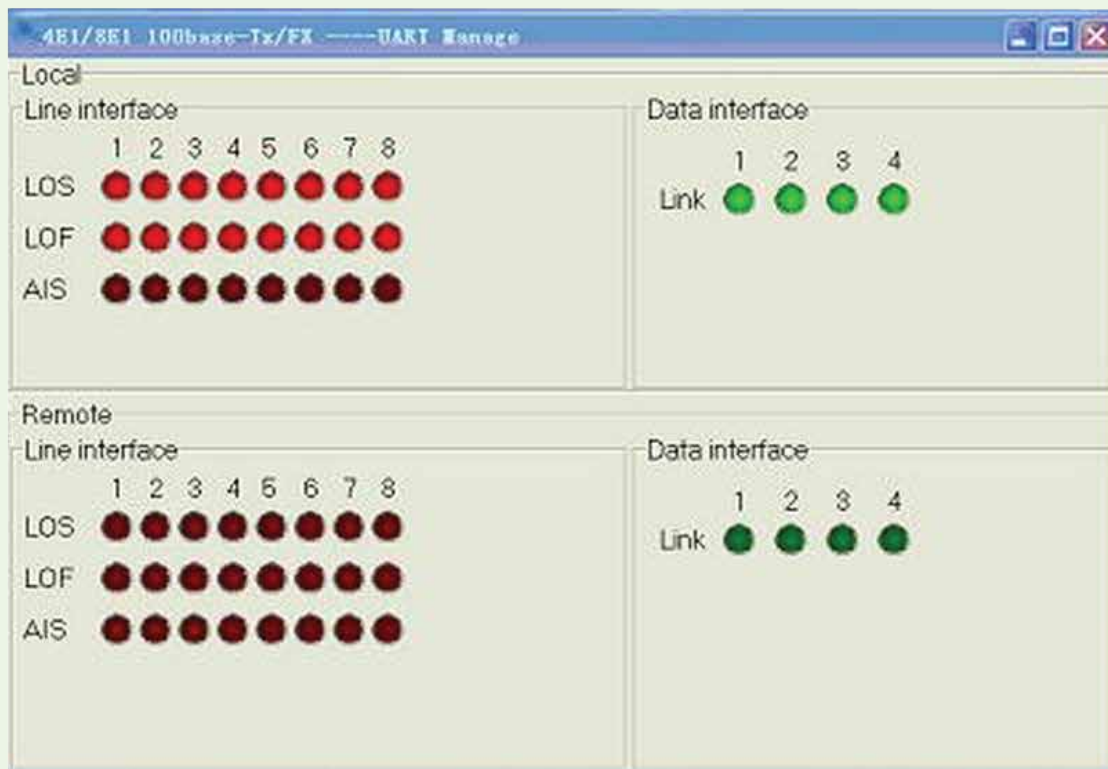
E1 interfaces conforming to ITU-T G.703 and G.704 proposals are provided at the end of WAN, supporting RJ45 and BNC connection modes. The E1 ports support both framing and un-framing architecture. Each channel can support 31 time slots for transmit. The 4 E1 channel provides a rate of 7.936 Mbps and accomplishes transparent transmission.

The equipment uses 10/100BASE-T Ethernet interfaces and supports adaptive 10/100M half/full duplex mode. Ethernet devices connected to 2908-FA bridge (such as SWITCH, HUB, Ethernet adapter card (NIC), etc.) can be set to 10M full duplex, 10M half duplex, adaptive 10M half/full duplex and adaptive 10/100M.

## Features

- \* According with IEEE 802.3, support 10Base-T, 100Base-T
- \* Support flexible setting of 1 to 4 E1 channels, auto detect the number of E1 channels and time-delay, select available E1 channels and more;
- \* Provide 2 loop functions: local E1 loop, remote E1 loop.
- \* Ethernet transmission transparent, support AUTO-MDIX, straight and crossover auto-adapt.
- \* Can transmit super-long frame of IEEE 802.1Q, support Ethernet exchanger with VLAN function.
- \* Support E1 channel hot plug, and auto detect available E1 channels.
- \* Support reset remote system from local system.
- \* 4 E1 can have 10 ms time-delay, CRC alarm limitation can auto insulate bad-quality
- \* Transmit channel by configuration, and is single direction insulation. when one direction error rate over limitation, cut only this direction, the other direction not affected.
- \* Power supply option: AC96 - 260V, DC-48V.
- \* Performs inverse multiplexing to send Ethernet bundled over 4E1, to get speed close to 8 Mbit/s;
- \* RS-232 monitoring port
- \* Both E1 interfaces - RJ-45 and BNC already on board.

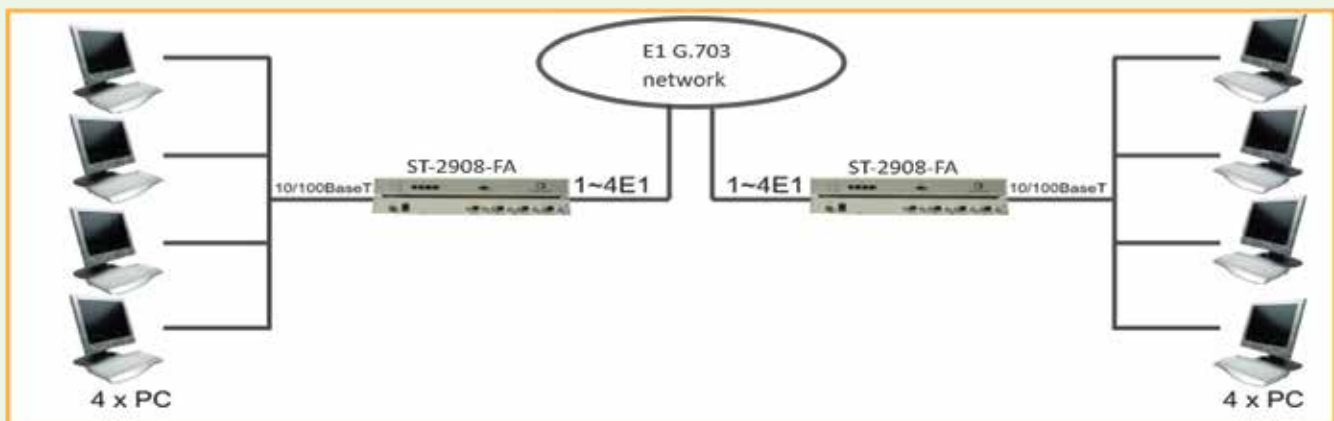
Screenshot of monitoring is shown below:



4 x E1 to 4 x 10/100 Ethernet protocol converter with RS-232 monitoring port

# Specifications

<b>E1 interface</b>	Impedance 75ohm, physical interface BNC Impedance 120 ohm, physical interface RJ45 Interface rate: 2.048 Mbps Coding: HDB3 Jitter tolerance: according with protocol G.823 Output jitter < 0.05UI Transmission range: 300m (UTP) 600m (coaxial cable)
<b>Ethernet interface (RJ45):</b>	Data Rate: 10/100Mbps auto-negotiation Standard: Compatible with IEEE802.3 Connector: RJ-45 Full duplex auto-negotiation
<b>Architecture:</b>	Stand alone: 19 in standard 1U cabinet; Rack mount: 19 in standard 4.5U cabinet;
<b>Power supply:</b>	Stand alone: 85V~264V AC input,5V/2A output -38V~-58V DC input,5V/2A output
<b>Rack mount:</b>	96V~260VAC input,5V/16A、12V/1Aoutput -38V~-58VDC input,5V/16A、12V/1Aoutput
<b>Other Specification</b>	Operating temperature: -5°C~65°C Storage temperature: -40°C~70°C Humidity: 5%~90%(no condensation)



## Ordering Information

<b>2908-FA/AC</b>	4 x E1 - 4 ETH interface convertor, 75/120 ohm E1 impedance supported, 96 - 220V AC
<b>2908-FA/DC48</b>	4 x E1 - 4 ETH interface convertor, 75/120 ohm E1 impedance supported, DC 48 V
<b>2908-FA/ACDC</b>	4 x E1 - 4 ETH interface convertor, 75/120 ohm E1 impedance supported, DC 48 V + AC 96 - 220 VAC

\* All Right reserved to Spiktel

\* Specs and Pictures of the product can be revised according to R&D

\* Products design in UK.

[www.spiktel.co.uk](http://www.spiktel.co.uk)

[www.spiktel.com](http://www.spiktel.com)

Enquiry: [sales@spiktel.com](mailto:sales@spiktel.com)

### Corporate Office

#### UK

SPIKTEL TECHNOLOGIES LLC.  
179B Norwood Road Southall Middlesex UK UB2 4JD  
Tel:+44-0208-8432233, Fax: +44-0208-5742244

### Branches

#### HongKong

SPIKTEL INTERNATIONAL CO. LTD.  
801, 8/F, Opulent Bldg.,  
402-406 Hennessy Rd., Wanchai, Hong Kong  
Tel: +852- 2893 8228 Fax: +852- 2893 1822

#### India

SPIKTEL TECHNOLOGIES PVT. LTD.  
F-23, Roshanara Complex, Roshanara Road,  
Delhi-110007 Tel:- +91-11-23824050, 64704050

#### Dubai

SPIKTEL TECHNOLOGIES MEA  
New Al Kuwaitat, Street 8, Villa 2B, AL AIN , UAE  
P.O. Box. 13787, Tel/Fax: +9713-03-7377053