

INTERFACE CONVERTERS

4 x E1 - Ethernet 10/100 BaseT converter



Ethernet interface

ST-2905-FA

Overview

The 2905-FA inverse multiplexers transmit up to 8 Mbps channel over multiple E1 links. They bridge the gap between E1 and E3, allowing bridges and routers to operate at their fastest rates. The 2905-FA has a built-in 10/100 Ethernet bridge with VLAN support for LAN-to-LAN applications over 4 E1 links. The AN-4E1-ETH fully meets all of the E1 specifications including G.703, G.704, G.706, G.732 and G.823. The unit features diagnostic capabilities for performing remote loopback tests.

Telcos, and systems integrators all over the world use 2905-FA to deliver high speed Ethernet over existing E1 G.703 lines

Features

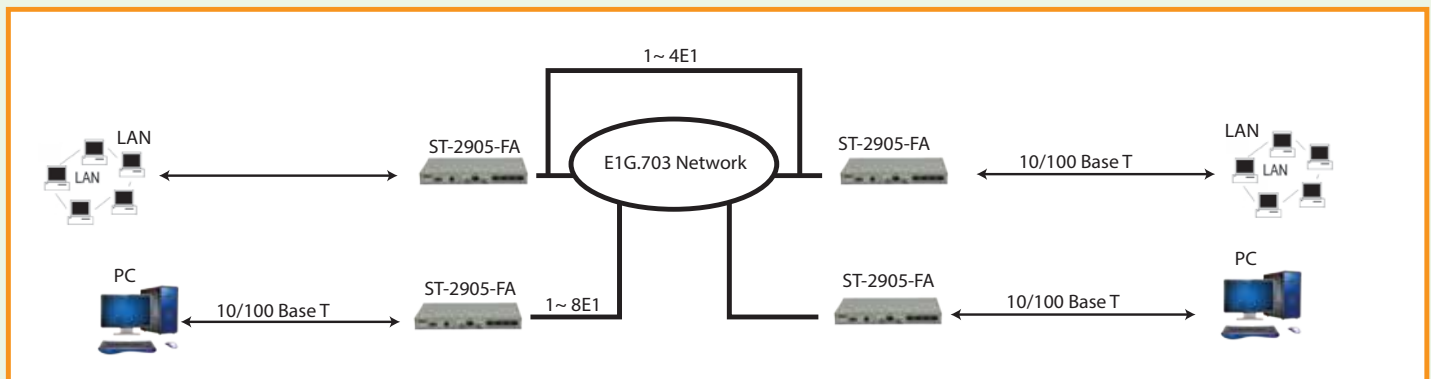
- * According with IEEE 802.3, support 10Base-T, 100Base-T
- * Support flexible setting of 1 to 4 E1 channels, auto detect the number of E1 channels and time-delay, select available E1 channels and more;
- * Provide 2 loop functions: local E1 loop, remote E1 loop.
- * Ethernet transmission transparent, support AUTO-MDIX, straight and crossover auto-adapt.
- * Can transmit super-long frame of IEEE 802.1Q, support Ethernet exchanger with VLAN function.
- * Support E1 channel hot plug, and auto detect available E1 channels.
- * Support reset remote system from local system.
- * 4 E1 can have 10 ms time-delay, CRC alarm limitation can auto insulate bad-quality
- * Transmit channel by configuration, and is single direction insulation. when one direction error rate over limitation, cut only this direction, the other direction not affected.
- * Power supply option: AC220V, DC-48V. The positive and negative terminal can be exchanged for DC-48V, easy for installation and maintenance.

4 x E1 - Ethernet 10/100 BaseT converter

Specifications

E1 interface parameter:	Channel capacity: 4 Channels Bit Rate: 2.048 Mb/s \pm 50 ppm Line Code: HDB3 Line Impedance: 120 Ohm / 75 Ohm Connector: RJ-45 or BNC Pulse Shape: ITU-T G.703. Jitter Performance: ITU-T G.823 Clocking: internal-clock, line-clock
Ethernet interface:	Interface Rate: 10/100Mbps Duplex: half and full duplex self-adapt. Interface character: match IEEE802.3, IEEE802.1Q (VLAN) Connector: RJ45, support auto-mdix MAC address capability: 4096
Power:	DC: -48V (-36 to -72V); +24 V (Optional) AC: 90 to 260 VAC ; 47 ~ 63Hz Power Interface: DC power terminal/AC socket Power Consumption: 8 W maximum
Working environment:	Operating temperature: 0 to 50°C Storage temperature: -20 to +70°C Relative humidity: 5% to 90% (25°C no condense)

Application scheme:



Ordering Information

2905-FA/ETH/AC	4 x E1 - ETH interface convertor, 75/120, 220V
2905-FA/ETH/DC48	4 x E1 - ETH interface convertor, 75/120, DC-48V
2905-FA/ETH/DC24	4 x E1 - ETH interface convertor, 75/120, DC+24V

* All Right reserved to Spiktel

* Specs and Pictures of the product can be revised according to R&D

* Products design in UK.

www.spiktel.co.uk

www.spiktel.com

Enquiry: sales@spiktel.com

Corporate Office

UK

SPIKTEL TECHNOLOGIES LLC.
179B Norwood Road Southall Middlesex UK UB2 4JD
Tel:+44-0208-8432233, Fax: +44-0208-5742244

Branches

HongKong

SPIKTEL INTERNATIONAL CO. LTD.
801, 8/F, Opulent Bldg.,
402-406 Hennessy Rd., Wanchai, Hong Kong
Tel: +852- 2893 8228 Fax: +852- 2893 1822

India

SPIKTEL TECHNOLOGIES PVT. LTD.
F-23, Roshanara Complex, Roshanara Road,
Delhi-110007 Tel:- +91-11-23824050, 64704050

Dubai

SPIKTEL TECHNOLOGIES MEA
New Al Kuwaitat, Street 8, Villa 2B, AL AIN , UAE
P.O. Box. 13787, Tel/Fax: +9713-03-7377053