

INTERFACE CONVERTERS



E1 to Ethernet 10/100BaseT protocol converter

Ethernet interface

ST-2901-FA

Overview

2901-FA E1 to Ethernet converter provides easy conversion from ITU-T G.703 E1 channel to Ethernet interface. Can be used widely in connecting between WAN and LAN, monitoring, etc. The Ethernet interface is 10/100Mbps auto negotiation and can be full/half duplex. The E1 is transparent and in full rate, which can support the E1 unframed mode, including fractional E1 per request. A pair of 2901-FA offer a cost effective solution for using existing E1 leased lines for transparent Ethernet service. Local management of the 2901-FA E1 to Ethernet Converter is provided via DIP switches. Front panel LEDs monitor the G.703 link, Ethernet LAN and serial ports for status and Loss of Sync. 2901-FA E1 to Ethernet converter compact G.703 Access Converter provides E1/2.048 Mbps Network Termination as well as serial or Ethernet LAN interface conversion in a standalone or rack mount package. 2901-FA terminates the G.703 Telco interface and converts the data for transmission to a user-oriented 10BaseT interface.

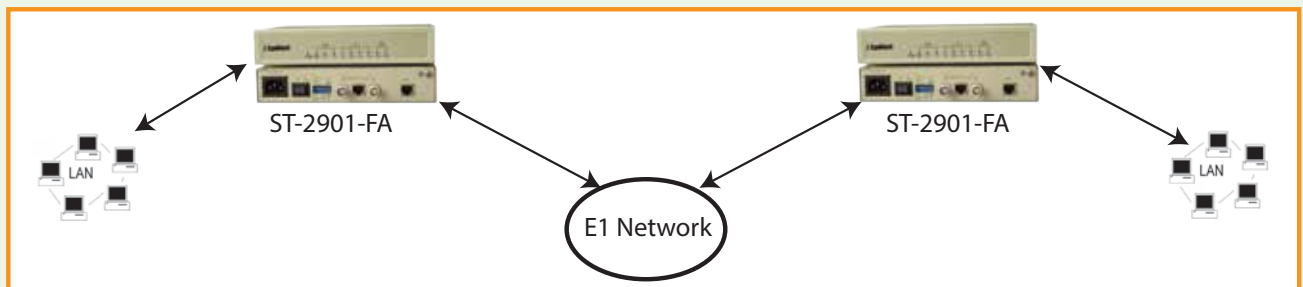
Features

- * Based on self -Copyright IC.
- * Semi/full duplex self adapt, support VLAN.
- * RJ45 interface support auto-mdix.
- * Provide 2 clock types: E1 master clock, E1 line clock.
- * Provide 3 loop functions: local loop, to remote loop, order remote loop.
- * Have pseudo random code test function, easy the installation and maintenance.
- * Support 2 impedances: 75 Ohm unbalance and 120 Ohm balance.
- * Have Ethernet monitor self-reset function, equipment will not dead.
- * Provide detecting realtime Ethernet communication status.

E1 to Ethernet 10/100BaseT protocol converter

Specifications

E1 interface parameter:	Channel capacity: 1 Channels interface rate: unframing/framing: N*64Kbps, N=0~31; Bit Rate: 2.048 Mb/s \pm 50 ppm Line Code: HDB3 Line Impedance: 120 Ohm / 75 Ohm Connector: RJ-45 or BNC Pulse Shape: ITU-T G.703. Jitter Performance: ITU-T G.823 clock: inter-clock, line-clock Output jitter<0.05UI
Ethernet interface:	Interface Rate: 10/100Mbps Duplex: half and full duplex self-adapt. Interface character: match IEEE802.3, IEEE802.1 Q(VLAN) Connector: RJ45, support auto-mdix MAC address capability: 4096
Power:	DC: -48V (-36 to -72V); +24 V (Optional) AC: 90 to 260 VAC ; 47 ~ 63Hz Power Interface: DC power terminal/AC socket Power Consumption: 8 W maximum
Working environment:	Operating temperature: 0 to 50 °C Storage temperature: -20; to +70 °C Relative humidity: 5% to 90% (25 °C no condense)
Dimensions	140mm (depth) x 210mm (width) x 40mm



Ordering Information

2901-FA/ETH/AC	E1 - 10/100BaseT converter 2048Kbps,10/100 Base T, SUPPORT VLAN, AC/110 OR 220 V
2901-FA/ETH/DC	E1 - 10/100BaseT converter 2048Kbps,10/100 Base T, SUPPORT VLAN, DC 48V

* All Right reserved to Spiktel

* Specs and Pictures of the product can be revised according to R&D

* Products design in UK.

www.spiktel.co.uk

www.spiktel.com

Enquiry: sales@spiktel.com

Corporate Office

UK

SPIKTEL TECHNOLOGIES LLC.
179B Norwood Road Southall Middlesex UK UB2 4JD
Tel:+44-0208-8432233, Fax: +44-0208-5742244

Branches

HongKong

SPIKTEL INTERNATIONAL CO. LTD.
801, 8/F, Opulent Bldg.,
402-406 Hennessy Rd., Wanchai, Hong Kong
Tel: +852- 2893 8228 Fax: +852- 2893 1822

India

SPIKTEL TECHNOLOGIES PVT. LTD.
F-23, Roshanara Complex, Roshanara Road,
Delhi-110007 Tel:- +91-11-23824050, 64704050

Dubai

SPIKTEL TECHNOLOGIES MEA
New Al Kuwaitat, Street 8, Villa 2B, AL AIN , UAE
P.O. Box. 13787, Tel/Fax: +9713-03-7377053