

## ETHERNET MULTIPLIER

### 16 x E1 G.703 + Ethernet



## 16E1 to Fiber multiplexer

### ST-2111-FA

#### Overview

ST-2111-FA is a fiber media transport for 16x E1 + 1 10/100 BaseT transmission. The BNC model provides unbalanced 75 Ohm coaxial connections while the RJ-45 model provides balanced 120 Ohm connections over twisted pair wiring.

All media converters are available with either multi-mode or single-mode optical transceivers and with connectors for SC, ST, or FC. In single mode they are available in up to 120 km versions reach, which will provide the ability to transmit and receive data using only a single optical fiber pair.

It allows network engineers to get greater functionality through advanced SNMP features, the network administrator can manage any converter module from anywhere on the network, detect any link loss and maintain each loop.

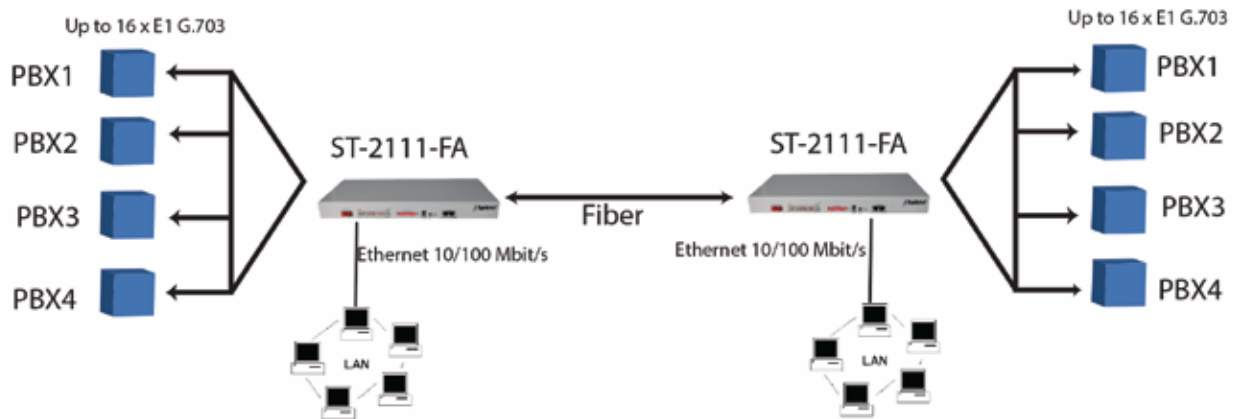
#### Features

- \* Can provide up to 16 E1 channels transmission transparently, and 1 10/100M Ethernet data channel.
- \* Compact design (1U - 44mm high) that performs E1 and Ethernet channel multiplexing & de-multiplexing to an optical output
- \* Provide 1 Ethernet interface (support VLAN, flow control, and self-negotiation; full/semi duplex, 10M/100M optional)
- \* Provides visible and audible alarm indication
- \* Local device monitor remote device (2 row LEDs, upper indicate local status, lower indicate remote status)
- \* Orderwire (EOW) channel for end to end installation and maintenance
- \* Power supply option: AC220V, DC-48V, DC+24V (optional).
- \* Provide function of 16 E1 remote loop, fiber local loop, and 1 interface of phone.
- \* Two fiber two direction and single fiber two direction (optional).
- \* Match telecom operation requirement, MTBF above 70,000 hours.
- \* Support both DC and AC power supply.
- \* High reliability, provide install type of 19 inch rack, desktop, hanging, and card.

# Specifications

<b>E1 interface parameter:</b>	<p>Channel capacity: 16 Channels                  Bit Rate: 2.048 Mb/s <math>\pm</math>50 ppm                  Line Code: HDB3                  Line Impedance: 120 Ohm / 75 Ohm                  Connector: RJ-45 or BNC                  Pulse Shape: ITU-T G.703                  Jitter Performance: ITU-T G.823</p>
<b>Ethernet interface:</b>	<p>Interface Rate: 10/100Mbps                  Interface character: match IEEE802.3, IEEE802.1 Q                  Connector: RJ45</p>
<b>Optical interface parameter:</b>	<p>Optical wavelength: 850/1310nm for multi-mode fiber,                  1310/1550nm for single-mode fiber.                  Optical interface: SC/FC/ST (Optional)                  Transceiver module: &gt; -6dBm                  Optical receiver sensitivity: &lt;-36(BER&lt;10)                  Receive range: &gt;-30dB                  Transmission distance: multi-mode 2 Km, single-mode 20/40/                  80 / 120 Km, single fiber                  WDM versions available</p>
<b>Power:</b>	<p>DC: -48V (-36 to -72V); +24 V (Optional)                  AC: 90 to 260 VAC ; 47 ~ 63Hz                  Power Interface: DC power terminal/AC socket                  Power Consumption: 10 W maximum</p>
<b>Working environment:</b>	<p>Operating temperature: 0 to 50°C                  Storage temperature: -20 to +70°C                  Relative humidity: 5% to 90% (25°C no condense)</p>

## Application Diagram



## Ordering Information

Product	Descriptions
2111-FA/ETH-MM	8xE1 and 10/100 Ethernet signal over multi-mode fiber 2km SC/ST
2111-FA/ETH-S20	8xE1 and 10/100 Ethernet signal over single-mode fiber 20km SC/ST
2111-FA/ETH-S40	8xE1 and 10/100 Ethernet signal over single-mode fiber 40km SC/ST
2111-FA/ETH-S80	8xE1 and 10/100 Ethernet signal over single-mode fiber 80km SC/ST
2111-FA/ETH-S120	8xE1 and 10/100 Ethernet signal over single-mode fiber 120km SC/ST

\* All Right reserved to Spiktel

\* Specs and Pictures of the product can be revised according to R&D

\* Products design in UK.

[www.spiktel.co.uk](http://www.spiktel.co.uk)

[www.spiktel.com](http://www.spiktel.com)

Enquiry: [sales@spiktel.com](mailto:sales@spiktel.com)

### Corporate Office

#### UK

SPIKTEL TECHNOLOGIES LLC.  
179B Norwood Road Southall Middlesex UK UB2 4JD  
Tel:+44-0208-8432233, Fax: +44-0208-5742244

### Branches

#### HongKong

SPIKTEL INTERNATIONAL CO. LTD.  
801, 8/F, Opulent Bldg.,  
402-406 Hennessy Rd., Wanchai, Hong Kong  
Tel: +852- 2893 8228 Fax: +852- 2893 1822

#### India

SPIKTEL TECHNOLOGIES PVT. LTD.  
F-23, Roshanara Complex, Roshanara Road,  
Delhi-110007 Tel:- +91-11-23824050, 64704050

#### Dubai

SPIKTEL TECHNOLOGIES MEA  
New Al Kuwaitat, Street 8, Villa 2B, AL AIN , UAE  
P.O. Box. 13787, Tel/Fax: +9713-03-7377053